

How to use the Baby Check app

the
lullaby
trust

This app is designed to help you decide whether your baby needs to see a doctor. The app asks 17 simple questions which test for different symptoms or signs of illness.

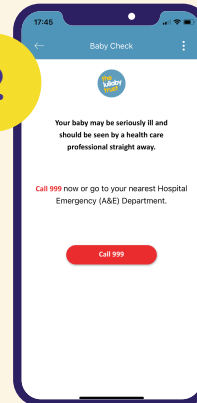


1

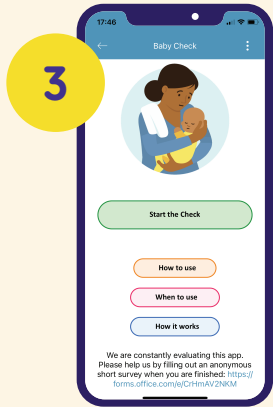


After viewing and agreeing to the disclaimer screen, press **'Begin'**. You will be asked if your baby has any of the four symptoms displayed on screen.

2



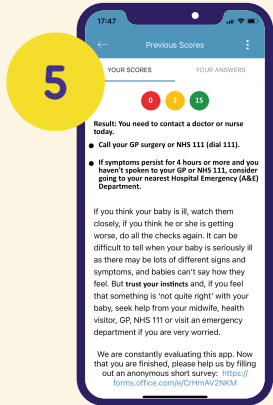
If you press **'Yes'**, your baby may be seriously ill and should be seen by a health professional straight away. A prompt will appear to call **999**.



If you press **'No'**, you will be taken to the main Baby Check page. Here you can learn more about the app. When ready, click **'Start the check'**.



You'll be taken through a **series of checks**. Tap the button that best answers your question. Each time you answer, you will automatically be taken to the next check. Press the back arrow button in the top left to return back to the previous page.



On completion, **a result will be shown giving you guidance on what action to take.**

These include; self-care, advising you to contact a health professional that day or advising you to seek urgent help.

**For every baby.
For every family.
Forever.**



Download the Baby Check app for free on Google Play or in the Apple App store.